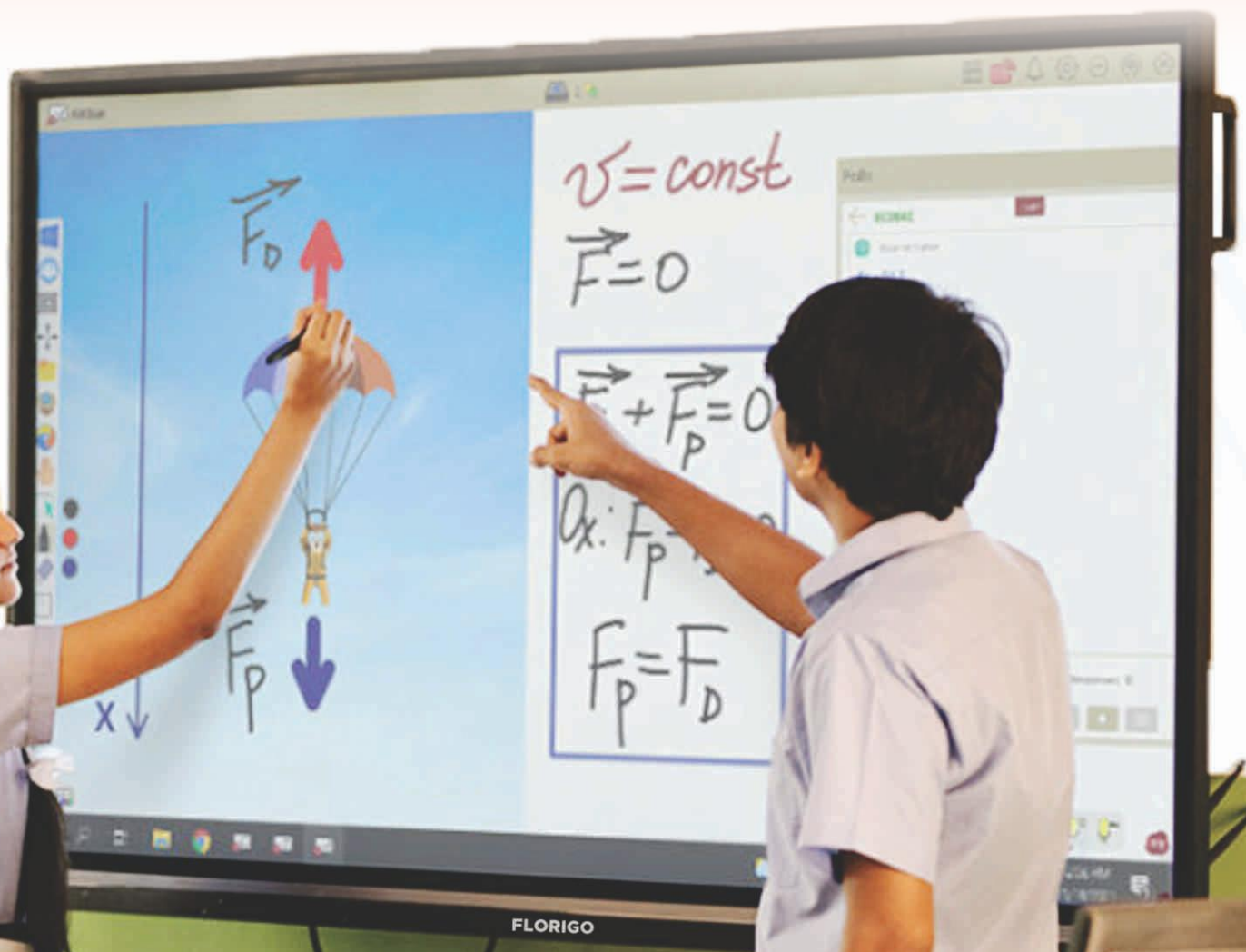




FLORIGO

INTERACTIVE FLAT PANELS FOR EDUCATION & CORPORATES

Learn today with ease!





Special Features

Newly designed for better lesson delivery



For Students

Inclusive Collaboration
Advanced Eye-Care Technology
Integrated Sound



For Teachers

Instant Connectivity
Seamless Usability
User-Friendly Software



For Schools

Simplified Management
Software Compatibility
Safety and Security

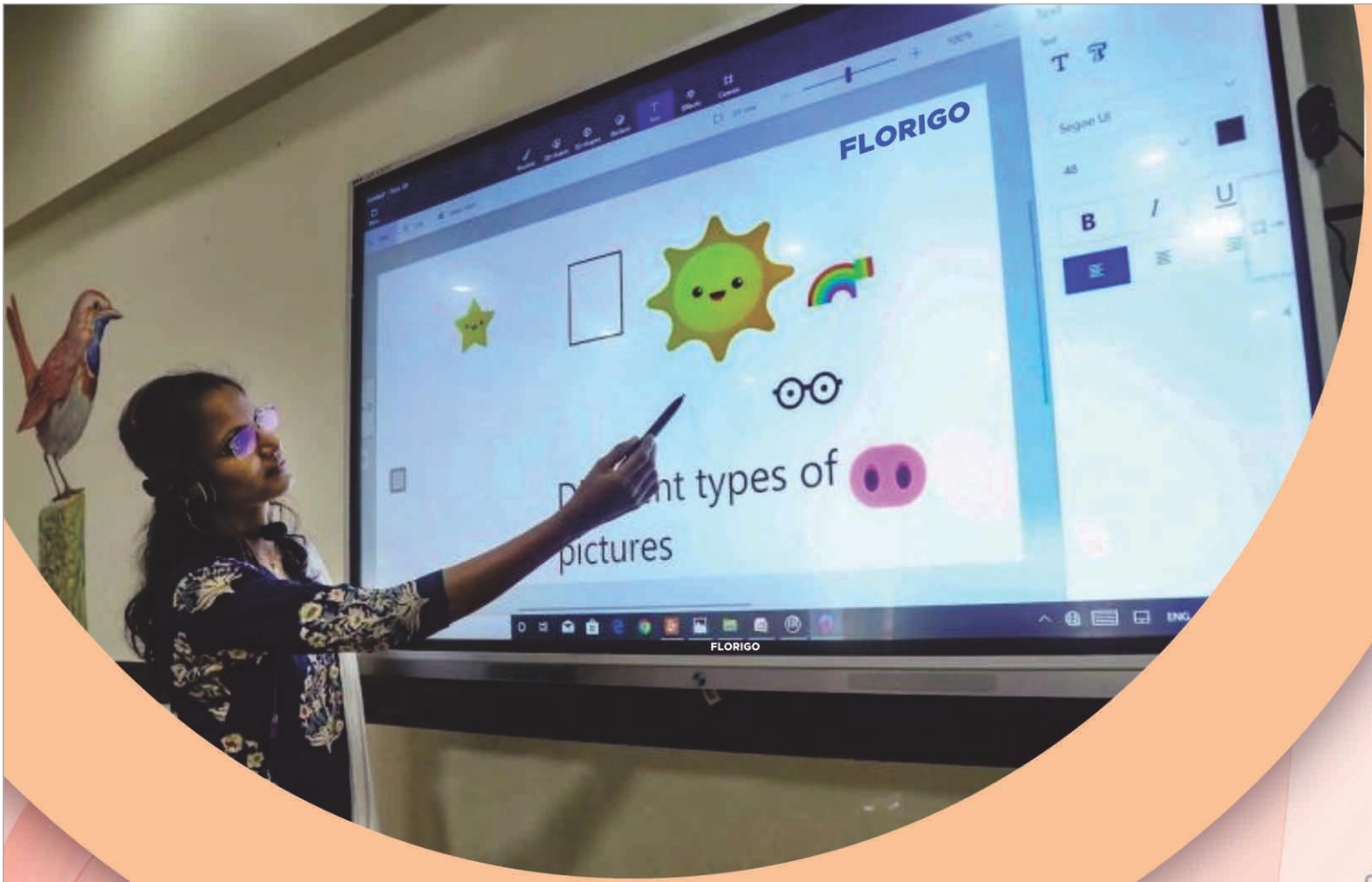
FLORIGO



For Conferences & Meeting

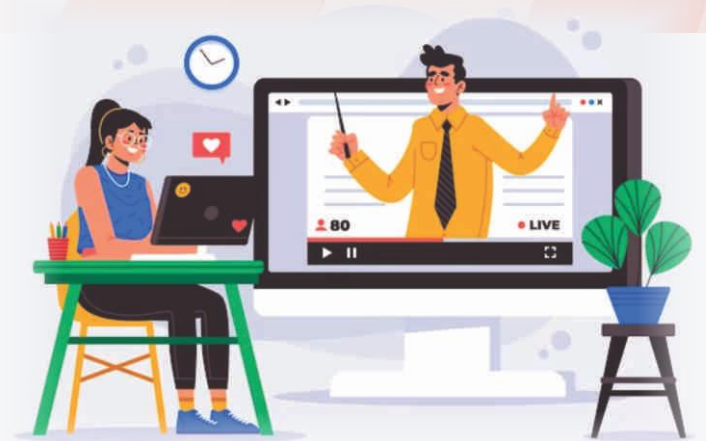
Start your free video conference now!





Designed for Teachers

User-centric and digitally styled to support lessons that flow.



FLORIGO

Instant connection via USB-C

A single-cord solution for data, video, and power with no preparation or technical know-how required



USB Type-C



Power charger

- Touch
- Video
- Audio



Industry first user-centric design

The unique angular design puts the control buttons and I/O ports clearly in the line of sight allowing teachers to seamlessly use the board without disrupting the lesson flow

Easy Casting

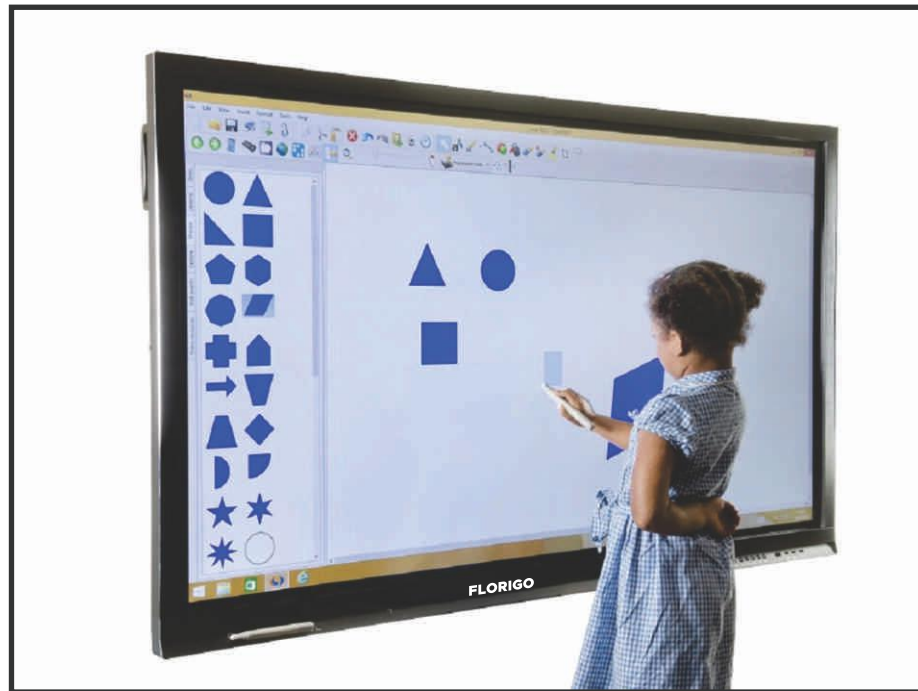
Florigo Display allows users to cast directly to the florigo via their internet browser for instant screen-mirroring with no cable or download necessary



FLORIGO

Best-in-Class Collaboration Tools

The 4K Ultra HD display delivers a completely natural writing experience with dual-pen. 33-point touch capability for in-class and online education.



Connect. Collaborate. Create

Better Learning within Reach
Interactive displays designed around the need of all teachers



Available sizes: 65\"/75\"/86\"/98\"

Boosting a new redesigned interface, all the tools you need are now even easier to reach.

General Specifications

High performance Android 11.0 with Floriboard Note Software α 3.0

Enhanced Productiveness & Efficiency in workplace through the built-in camera and microphone. Floriboard Note α 3.0 allows you to connect and present wireless anytime, anywhere over split-screen with mobile devices. The most advanced touch technology enables a highly intuitive and accurate touch experience.

N055 3		Model	FL6503	FL7503	FL8603	FL9803
Panel	Resolution	Ultra HD 3840 x 2160				
	Contrast Ratio (DCR)	15,000:1				
	Viewing angle	178° (H) / 178° (V)				
	Response Time (ms)	4				
	Brightness (nits)	450	450	450		
Touch Screen	Detection Method	Advanced Infrared				
	Touch Point	Windows 7 / 8 / 10, Android - 20 points Windows XP, Linux, Mac, Chrome - 1 point				
	Touch Accuracy (typ.)	±1mm				
	Panel Life	80,000 HOUR				
Systems	Standard	Android 11.0				
	Operating Systems	Windows 7 / 8 / 10, Windows XP, Linux, Mac, Chrome				
Mother board	Mother Board	T982 (CVTE)				
	CPU / GPU	Cortex A73, 1.8GHz / Mali G52 MP2				
	RAM / ROM	8GB LPDDR4 / 128GB eMMC Flash / Optional				
WiFi	Main Chipset	MT7668BU+RTL8822BU				
	Operating Frequency	2.4GHz / 5GHz				
	Wifi Standard	802.11a / b / g / n / ac				
	Bluetooth	2.1+EDR / 4.2 / 5.0				
Camera	Pixel	13 Mega (Optional)				
	FOV	78°				
	Array Size	MJPEG : 3840 x 2160 (12fps) 4139 x 3104 (8fps) 1280 x 720 (30fps) 1920 x 1080 (30fps)				
Array Mic	Array Count	6-Mic (Optional)				
	Pick up Distance (max.)	8m(Angle : 45°~135°)				
	Features	Echo Removal Noise Suppression Dialog Improvement Auto Gain				
Speaker	Audio	20W x 2				
Tempered Glass	Thickness	3.2mm				
	Features	Anti-Glare Anti-Finger Print Anti-Microbial 8 MOHS				
Operation	Temperature / Humidity	0°C ~ 40°C / 20% ~ 80%				
Power	Input Voltage	AC 100 ~ 240 V, 50 / 60 Hz				
	Power consumption	300W	380W	460W		
Interface	I/O port	Front	4 x USB3.0 (PC) 1 x 1xSDMIN x 1x TouchUSB x 1xUSB Type C			
		Side	2x USB3.0 1xTouch USB 2xSDMIN 1x USB 2.0 1x Rs232 1x Optical Out			
		Bottom	1xAudio Line out 1xAudio line in 1xRJ45IN 1xRJ45 Out			
	OPS	Ready				
Dimension	Set (W x H x D)(mm in)	1511 x 914.95 x 93.25 59.49 x 36.02 x 3.67	1721.9 x 1029.05 x 87.45 67.79 x 40.51 x 3.44	1967.35 x 1167.25 x 89.65 77.45 x 45.95 x 3.53		
Weight	Set (Kg lb)	46 101.41	56 123.46	70 154.32		
Stand	Wall Mounting	Set (W x H)(mm in)	600 x 400 (8M screw)	800 x 400 (8M screw)	800 x 600 (8M screw)	
	Movable Stand	Set (W x H x D)(mm in)	1285 x 1760 x 700 50.59 x 69.29 x 27.56			

Sliding System for IFPD Security

FLORIGO

→ 65 ←



SPECIFICATION OF SLIDING HORIZONTAL SYSTEM (65")

- Outer Length of Frame : 3360 mm
- Outer width of Frame : 1100 mm
- Thickness of Frame : 210 mm

→ 75 ←



SPECIFICATION OF SLIDING HORIZONTAL SYSTEM (75")

- Outer Length of Frame : 3600 mm
- Outer width of Frame : 1300 mm
- Thickness of Frame (Depth) : 210 mm

→ 86 ←



SPECIFICATION OF SLIDING HORIZONTAL SYSTEM (86")

- Outer Length of Frame : 4125 mm
- Outer width of Frame : 1300 mm
- Thickness of Frame(Depth) : 210 mm

VERTICAL SLIDING SYSTEM



For IFP the Vertical Sliding System has only 1 board for writing and covering IFP

Board Size is Similar to IFP Size

IFP Size: 55" inch , 65"inch , 75"inch , 86"inch , 98"inch



Slot-in PC (OPS)

It provides additional computing power touch functionality and power needed to operate CPU intensive applications

CPU	Intel® Core™ i5-8259U
RAM	8GB (up to 64GB)
Storage	256GB SSD
VGA out	Yes
DP out	Yes
HDMI out	Yes
RJ45	Yes
Wifi/BT	Yes
OS	Free DOS

Operation System	Windows ® 7, Windows 8.1, Windows 10 or later; MacOS™ 10.10 or later; Chrome OS; Linux
System Requirement	HDMI Output & USB Type-A
WiFi Frequency/ Authentication Protocol	2.4GHZ & 5GHZ/5.8GHZ DUAL BAND 802.11 A/B/G/N/ AC ; WPA2-PSK
Resolution/Frame Rate	FHD/30 fps
Number Of Sources Simultaneous On Screen	4(viewBoard Cast receiver); 1 6(viewBoard Cast Pro receiver)
Power	Voltage: 5V 650mA
Connector	USB: USB2.0 Type-A compatible to USB2.0/3.0 HDMI: HDMI 1.2 above



Cast Button

Connect your device and cast your content effortlessly from your preferred device to your wireless display through USB-C or HDMI cable

Corporate Office

35, Jai Durga Colony
Proposed London
Street Rd, Nagpur - 440022

Toll-Free

+ 91 9284777789

Email

info@florigo.co.in

Website

www.florigo.co.in

Reseller Details